

Family Engagement in Highline

Administrative Intern Presentation

January 11, 2021



Strongly Agree, Agree, Disagree, Strongly Disagree

All families have dreams for their children and want the best for them

All families have the capacity to support their children's learning

Families and school staff are equal partners

The responsibility for cultivating and sustaining partnerships among school, home, and community rests primarily with school staff, especially school leaders



What is the building administrator's role in establishing strong family engagement practices?

AGENDA



Vision and Theory of Action



The Family Engagement
Team



Strategies and Practices



Questions & Discussions

VISION

Family Engagement in Highline Public Schools means trusting relationships, open communication, and opportunities for families and schools to partner in their students' learning.

Trusting Relationships: Family engagement is about families and schools developing a deep, meaningful relationship that supports student learning, not just events.

Open Communication: Family engagement means timely, open, two-way communication utilizing platforms such as phone calls, emails, in-person meetings, online portals, newsletters and more.

Families & School Partnerships: Strong partnerships mean families and schools respectfully work together to identify meaningful opportunities for families to support students at home and at school.



Theory of Action

If we

Develop the capacity of school and district staff around family engagement best practices

And honor the expertise of our families while providing them with critical information about the school system

And schools create the space for families to authentically partner



Theory of Action continued

Then

Staff and families will cultivate relationships built on mutual trust

And then

Staff will implement strong family engagement practices in partnership with families

Theory of Action Continued

So that

Families and staff are working together to support students' academic success.



Family Engagement Team



Kisa Hendrickson
Chief Engagement & Partnership Officer



Lolita O'Donnell
Director of Family & Community Partnerships



Rebeca Pinzon



Rocio Ceja

Family Engagement
Specialists



Rosa Manriquez



Rovenna Johnson



Family Engagement Canvas Site

Family Engagement Resources Tools and strategies

Family Engagement Best Practices

Family Engagement Professional Learning Sessions

Family Engagement Catalogue



Community
Room





What is Family Engagement?

- Welcoming environment
- Relationship-building
- Open two-way communication
- *Addressing differences*
- Linked to learning
- Advocacy/sharing power

Welcoming Environment Scan

Friendly
Office Staff



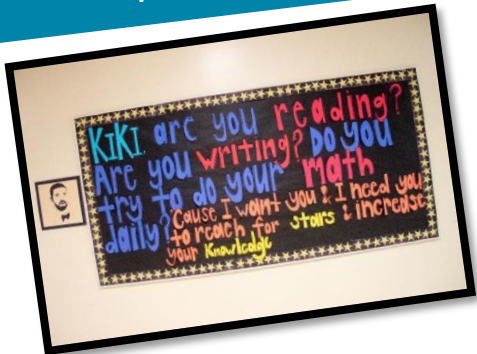
Access

Friendly
Signs



Standards of Welcoming Behavior

Knowing Students by
Name



Resource
Room



Student
Work on
Display

Academic Parent Teacher Teams



Bow Lake

McMicken

Hilltop

Mount View



Parent University

- Understanding the School System
- Knowing Your Rights
- Digital Citizenship
- Family Sessions on navigating the website and accessing ParentVue
- Support sessions in a time of COVID





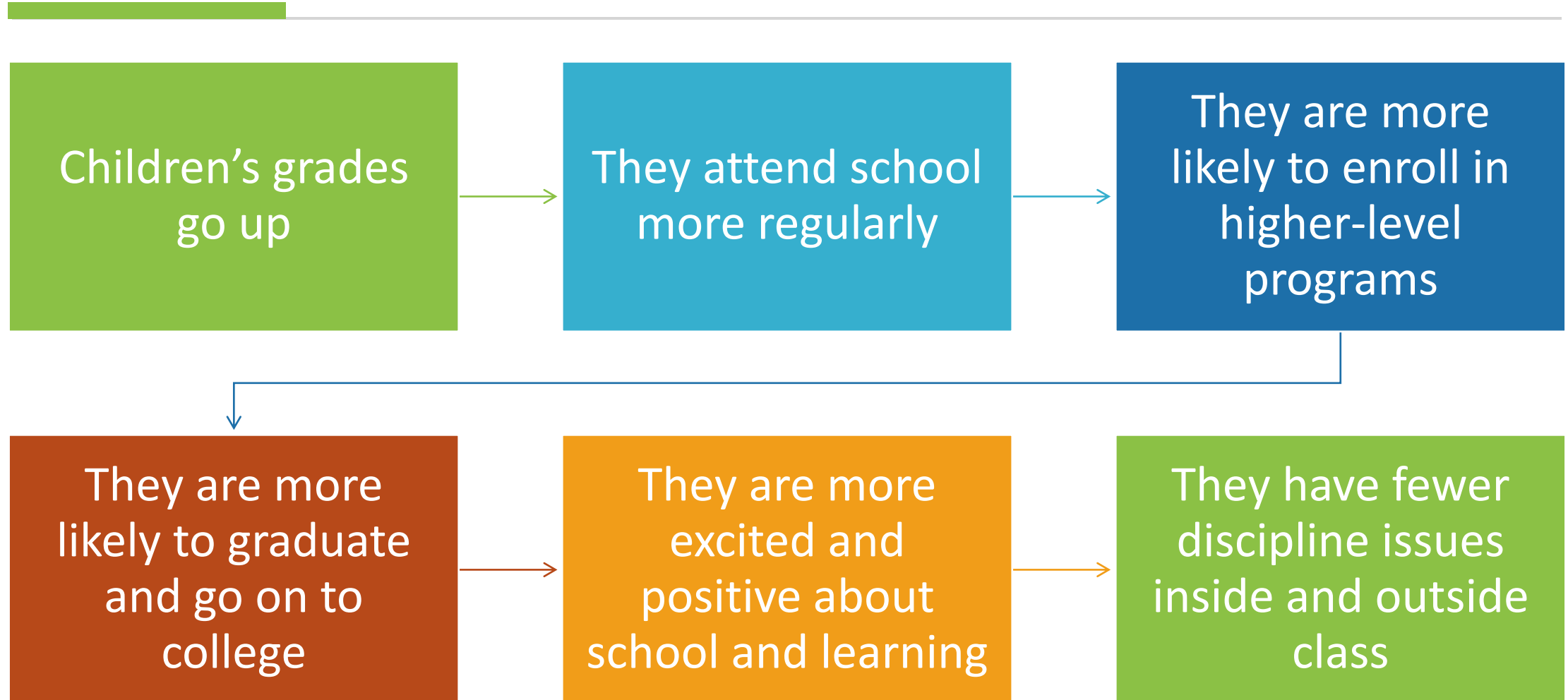
Community Partnerships

Highline Public Schools values strong community partnerships. We cannot do this work alone. We are better when students, families, community and educators work hand-in-hand.

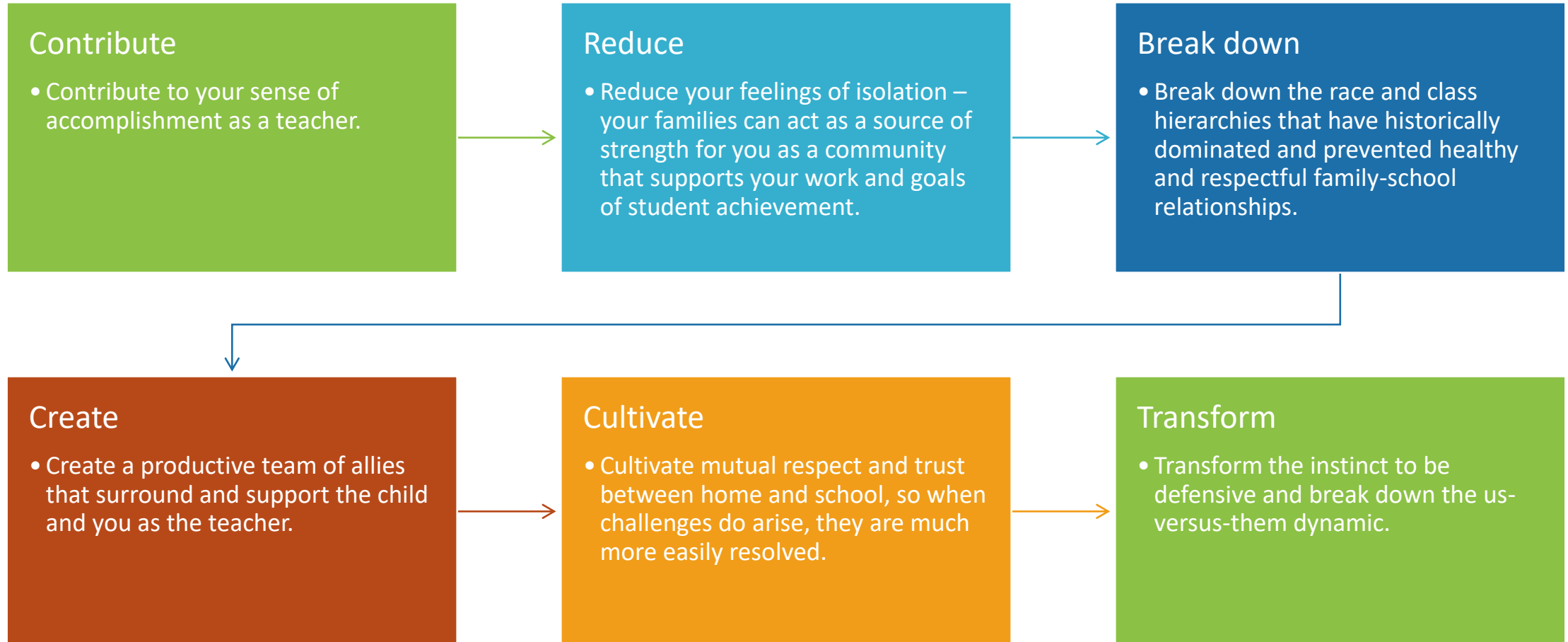
- Choose 180
- SWYFS/New Start
- Arts Corp

[Community Partnership Dashboard](#)

When Families are Engaged and Involved their Children Succeed



Family Engagement Benefit to Teachers





What conditions do administrators have to put in place for meaningful partnerships?



Establishes belief that parents are their children's first teachers



Family engagement is a priority



Resource allocation: budget, time, ESC, PD



Establish a team



Administrator is accessible

Conditions for Family Engagement



Questions