



HIGHLINE
PUBLIC SCHOOLS

WELCOME Family Partnerships Bilingual Para/Liaison Session

Please click mute as you log on
We will start at 10:30
Thank you!

Family Partnerships Bilingual Para/Liaison Session



Welcome



Introductions



Reminders for
Compensation

Please change your screen name
to your first and last name
You must be present the entire
session to receive compensation



The individual 30-minute activity needs to
take place during your contracted time

Welcoming Ritual



- Introduce yourself, your role and your school.
- If you had to describe how you feel today as weather – what would that weather be?

Objectives



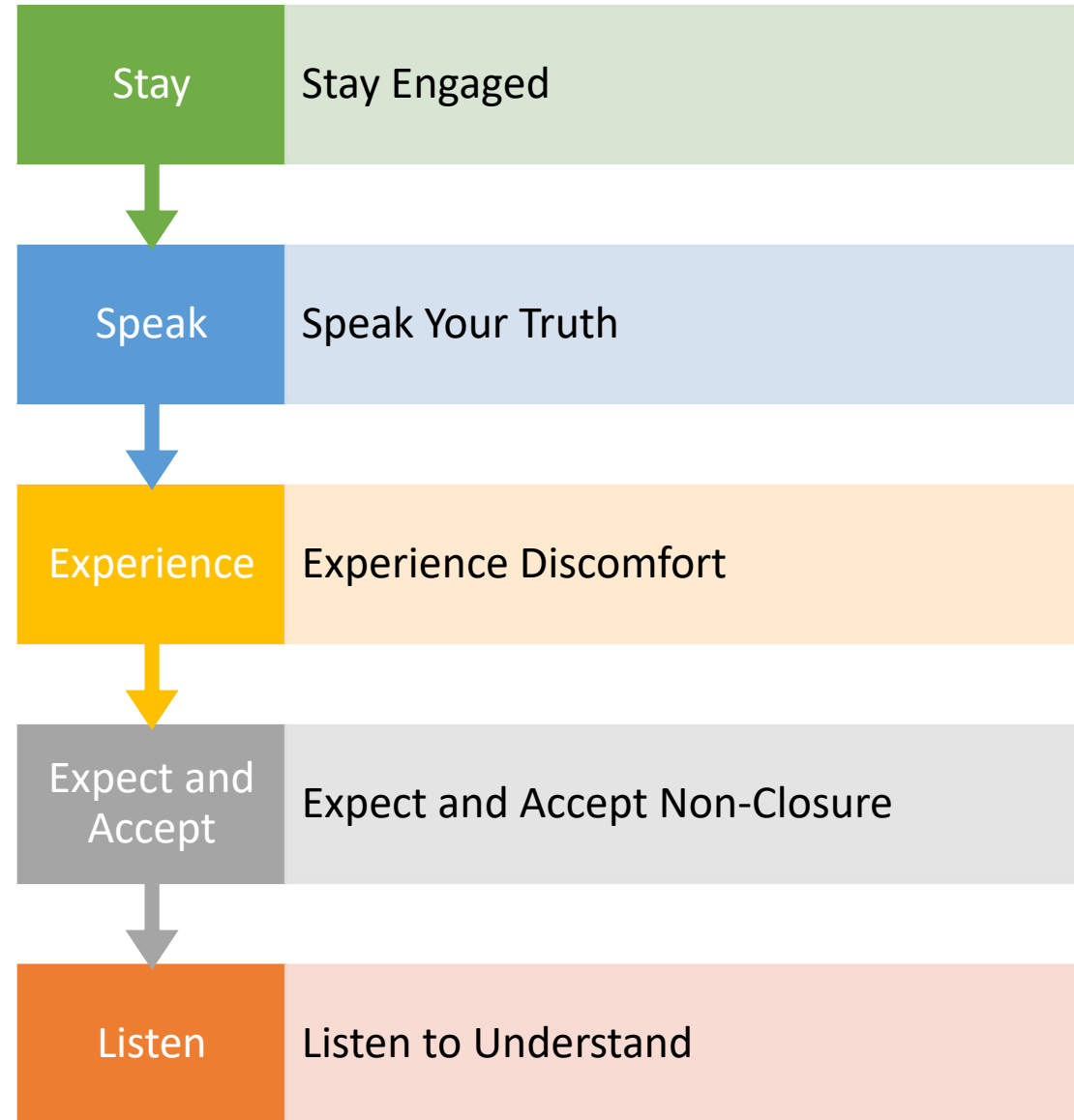
DIVE DEEPER IN EXAMINING CORE
BELIEFS



ENGAGE IN DIALOGUE WITH YOUR
COLLEAGUES



GAIN AN UNDERSTANDING OF
INSTRUCTIONAL PRACTICES THAT WILL
BUILD RELATIONSHIPS WITH FAMILIES



Norms

Breakout Room Expectations

- Introduce Yourself
- Assign a notetaker
- Engage in the conversation and everyone should contribute.
- Be prepared to share out with the larger group.
- Prompts are in the chat box or you can access the shared google drive



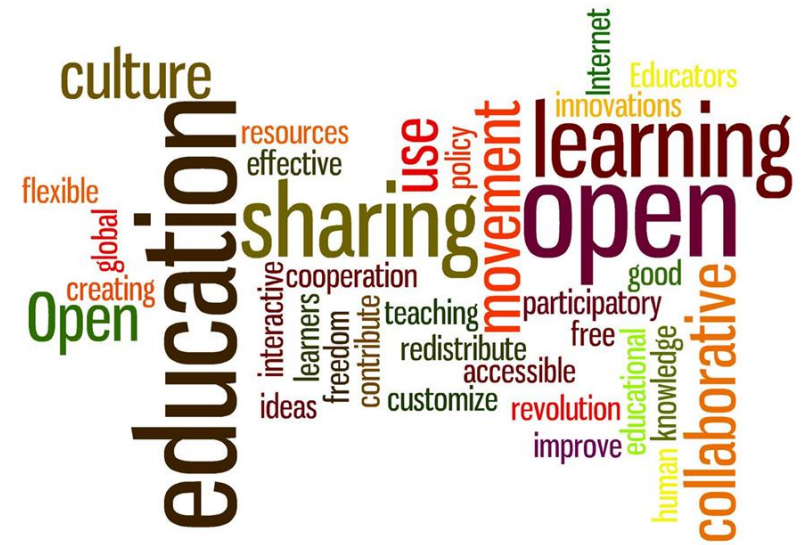
OUR PROMISE

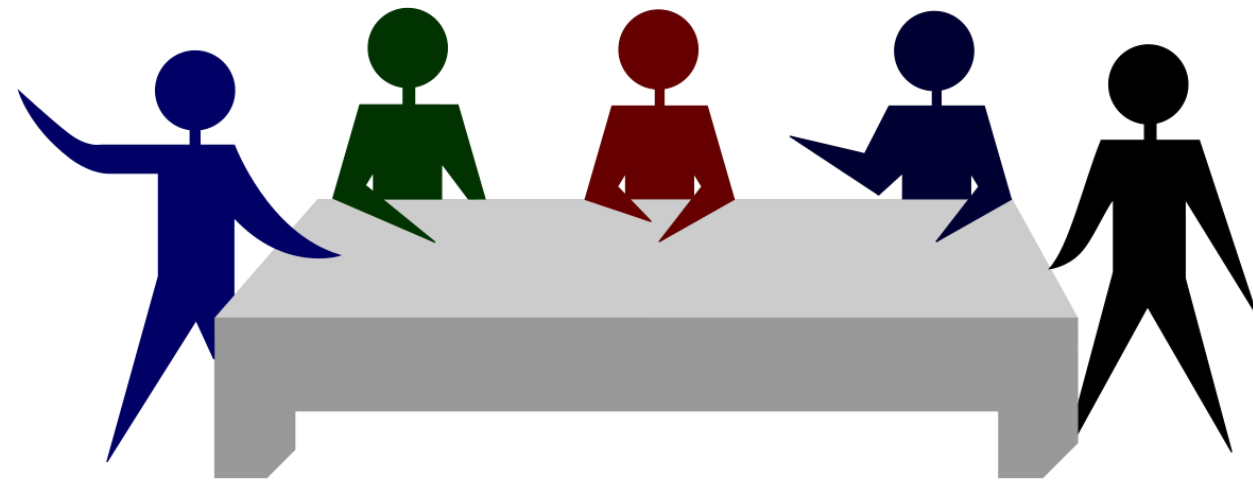
Every student in Highline Public Schools is known by **name, strength and need**, and graduates prepared for the **future they choose**.

Equity – Relationships: We will know our students by name, strength and need and have open, two-way communication with our students, families and community partners.

The Importance of Bilingual Paraeducators and Family Liaisons

SUMMARY: Provides individual and group academic tutoring support to ELL qualified students in their native language. The position collaborates with teachers on meeting individual students' English development needs. The Bilingual paraeducator serves as a liaison between the school and students' family. He/she provides interpretation services for non-English speaking families and school staff. This position works with schools and families to develop a welcoming climate in the schools. Leads and develops family engagement activities for the bilingual community.

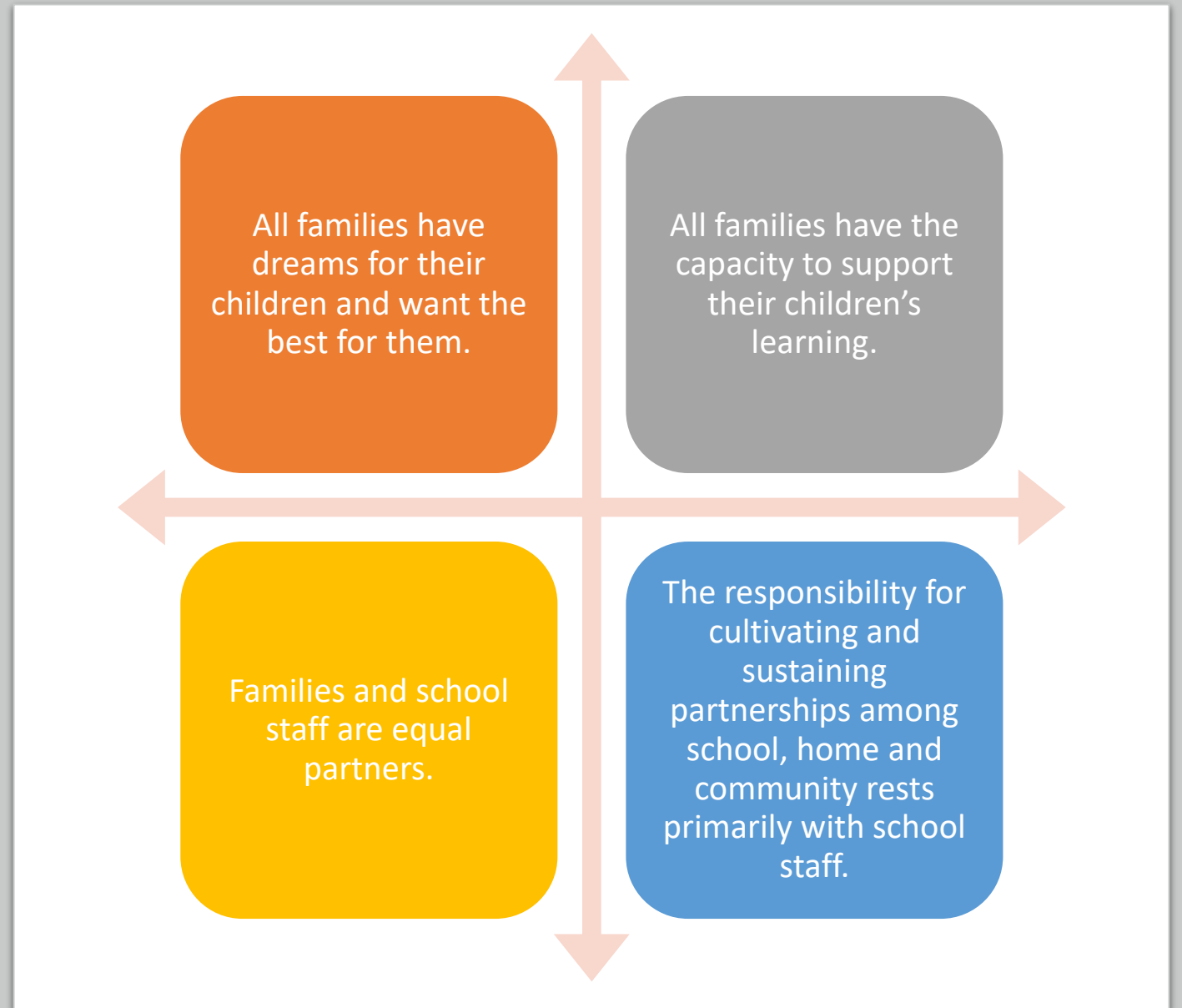




Breakout Session 1

- What are you already doing to support building Family Partnerships at your school?

Review of Essential Core Beliefs



*Core Belief #1
All families have
dreams for their
children and
want the best
for them.*

Instructional Model

General Expectation: *Partner with families*

- Collaborate with families to evolve the academic program and their support roles.
- Work with families to build their capacity to support student learning.

Core Belief # 2
All families
have the
capacity to
support their
children's
learning.

Instructional Model

Guiding Principle:

Funds of Knowledge

- Actively discover and use the abilities, knowledge, perspectives and experience of families to support their student's learning.

*Core Belief #3
Families and
school Staff
are Equal
Partners*

Instructional Model
Guiding Principle:
Equal Partners

- Work with families as equal partners in their students' education

Core Belief #4

The responsibility for cultivating and sustaining partnership among school, home and community rest primarily with school staff.

Instructional Model **Guiding Principle:** *School Responsibility*

- Own the responsibility for cultivating and sustaining the partnership among school, home and community

The Family Guide
is here to support
students and
families as we
navigate the 2020-
21 school year
together with you.

Parent Vue

What to
Expect from
Teachers

Attendance

Childcare

Meals for
students

Dual Language

Grading

Athletics

Supporting
Your Student

Family Engagement Resources, Tools and Strategies

[Canvas Resources](#)

[September Family Connections](#)

[Funds of Knowledge Resource](#)

[Virtual Home Visit](#)

[Articles and Resources](#)

Breakout Session 2

How will you use the tools and strategies shared to support building family partnerships at your school?



Colleague Connections

What support might you need to help you and your school build family partnerships?

What professional learning topics would you like to explore?

30 Minute Individual Activity

- Understand the Expectations of Family Partnerships in the Distance and Hybrid Learning Instructional Models
- Participate in a district wide survey on Family Engagement
- Review a video that outlines the Core Beliefs of Family Engagement
- Reflect on the Core Beliefs of Family Engagement and How Your Beliefs Impact Relationships with Your Families

Thank You

If you have questions or comments on the presentation, please feel free to contact us.

Lolita.Odonnell@highlineschools.org

Rebeca.Pinzon@highlineschools.org

Rocio.Ceja@highlineschools.org

Rosa.Manriquez@highlineschools.org

Rovenna.Johnson@highlineschools.org

Martine.Wagoner@highlineschools.org

OPTIMISTIC CLOSURE

What are my next steps?

What's the next conversation I'm going to have about this, and with whom?

What is a word or phrase that reflects how I feel about moving forward with this?

